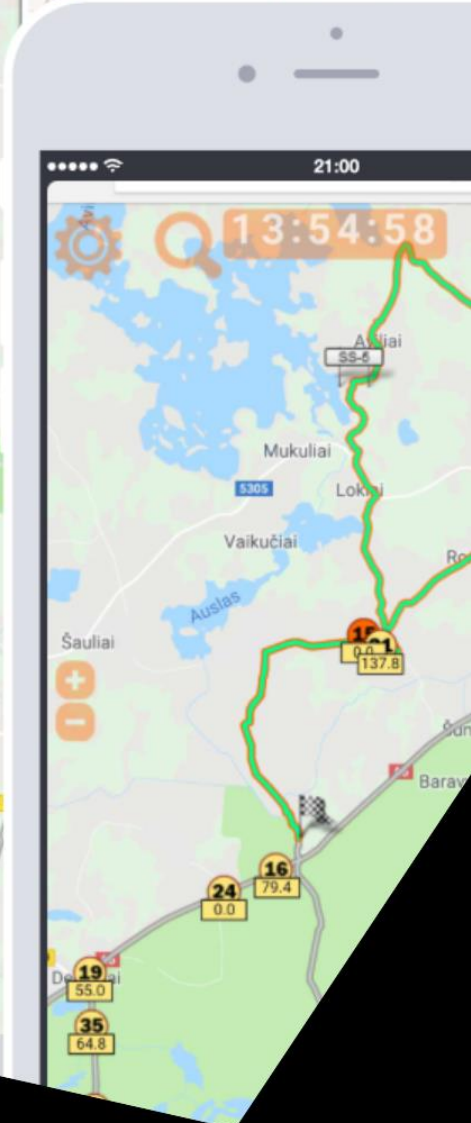


Q	T	1	2
5	6	7	8
Stage			
1	4	S.Pla	9:43.80
2	3	V.Žal	9:46.10
3	1	V.Šve	9:54.40
4	2	R.Čap	9:57.90
5	5	J.Vor	9:58.70
6	10	J.Ber	10:04.10
7	20	D.Joc	10:04.90
8	9	G.Not	10:06.40
9	14	M.Sam	10:11.90
10	18	G.Lie	10:13.40
11	12	B.Van	10:17.60
12	11	I.Bul	10:21.40



Tracking System Ireland



Table of contents

Safety Tracker and Activation Guide	2
Safety Tracker System - Competitor Information	3
Guidelines for STS Equipment Installation	5
In-Car Equipment Specifications for Safety Tracker System	7
GPS Safety Tracking System Competitor Information	8
Continuous Improvement Through Feedback	9
Safety Tracker System – Helpful Information	10

Safety Tracker and Activation Guide

Use of the Safety Tracking System During Stages



Situation	People injured?	What to do?
Case 1: Car stopped for any technical reason	None	Press and hold the green OK button for two seconds within 15 seconds of stopping. Then call Rally Control to inform them of the reason for stopping within one minute.
Case 2: Car stopped after accident or went off the road.	None	Press and hold the green OK button for two seconds within 15 seconds of stopping. Then call Rally Control to inform them of the reason for stopping within one minute.
Case 3: Car stopped in Stage for wheel changing or car repair.	-	Press and hold the green OK button for two seconds within 15 seconds of stopping. If this takes longer than two minutes, call Rally Control and inform them.
Case 4: Car stopped after accident or OFF the road.	YES	Press the red SOS button as soon as possible after an accident. If you are able to, call Rally Control to inform them of the situation.
Case 5: You arrive at the scene of another crew's accident, where there is an SOS sign.	-	Stop and activate the red SOS button ASAP.
Case 6: You receive an electronic red flag signal in the form of LED indicators and a beeper on the STS console.	-	Reduce your speed immediately to the public road limit and press the green OK button within 30 seconds to confirm this to Rally Control . Once you press OK to acknowledge the red flag the buzzer will turn off.
Case 7: Your car blocks the road.	-	If it is not possible for other participants to overtake your car, please turn the Blocked Road Switch ON . You can only turn it off if your car is in a safe place and the road is clear.
Case 8: Your car is on fire.	-	If you can't extinguish the fire with the onboard extinguishers, switch the Fire Switch ON immediately! You can then switch it off once the fire is out.

CONTROL ROOM PHONE NUMBERS

+353 85 8301756 | +353 85 8301576 | +353 85 8301780 | +353 85 8301788

Safety Tracker System - Competitor Information

Motorsport Ireland (MI) has contracted **4Rally**, a Lithuanian company, to supply a **Safety Tracker System (STS)** that will be mandatory for all Motorsport Ireland permitted rallies.

Objective

The primary goal of the STS is to improve and minimize response times when deploying medical services in case participants require urgent medical assistance following an accident. This system aims to enhance overall safety levels within rally events. Additionally, the STS offers several advantages that can greatly improve the efficient management of rallies, benefiting both competitors and event organizers.

Complementing Safety Procedures

It is essential to understand that the STS is not intended to replace the traditional manual safety procedures and processes that have been successfully utilized for years. Instead, the STS is designed to complement these established safety measures.

Equipment Overview

The in-car equipment consists of two main components:

- 1. Main Receiver/Transmitter Unit:**

Fixed to a roll cage bar in the rear of the car using a small ratchet strap (provided with the kit).

- 2. User Console:**

Mounted in the centre front of the car, ensuring that both crew members can see and reach it while secured in their seats.

Installation Instructions:

Cable Connection:

- The user console connects to the main receiver/transmitter unit via a cable.
- When running the cable to the rear of the car, ensure it is securely fixed along the inside of the roll cage bars, using cable ties (note that cable ties are not supplied).
- Care should be taken when routing the cable to prevent damage during an accident, especially where body panels could be pushed against the roll cage.

Mounting Locations:

- The receiver/transmitter unit should be securely mounted to a roll cage bar to ensure stability during the event.
- The user console should be positioned where both crew members have easy access while remaining securely belted in.

By adhering to these instructions, the installation of the Safety Tracker System will be completed efficiently, ensuring that the system remains functional and effective throughout the rally.

Conclusion

The introduction of the Safety Tracker System marks a significant advancement in ensuring competitor safety during rallies. By improving communication and response times, this initiative will not only enhance safety but also streamline event management. Competitors are encouraged to familiarize themselves with the equipment and follow all installation guidelines to make the most of this valuable resource.

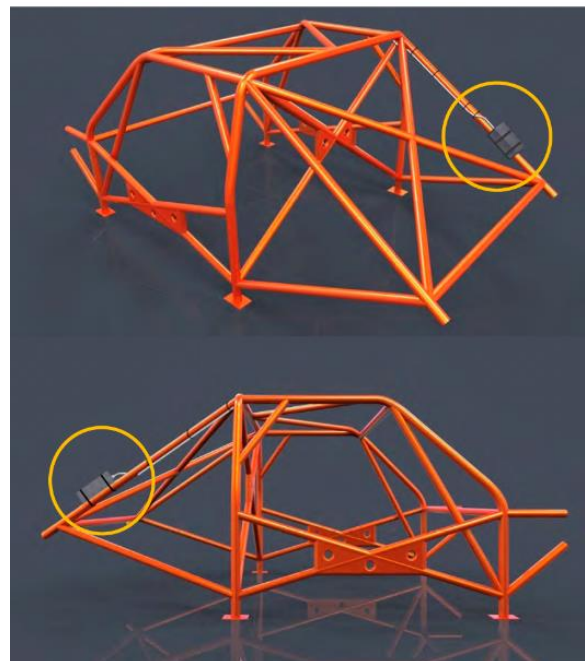
For any further questions or additional guidance, please do not hesitate to reach out.



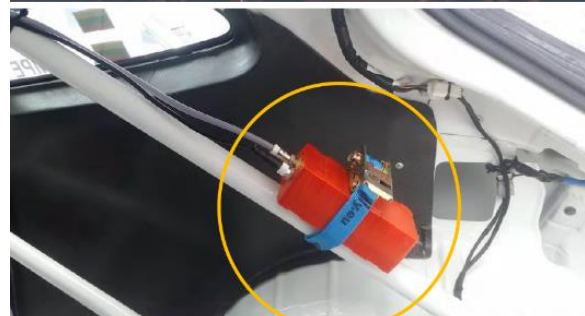
User Console – in reach of both crew members



Connecting Cable – routed on inside of roll cage in order to avoid damage in event of car rolling etc.



Receiver / Transmitter Unit



Guidelines for STS Equipment Installation

Overview

The STS equipment is completely autonomous and does not require a connection to the vehicle's power supply unless specifically instructed otherwise. It must be mounted in the car prior to the mechanical scrutineering presentation.

Briefing and Functionality Check

- A short briefing on the use of the system will be provided to each crew if required, typically during the equipment distribution.
- A functionality check will be conducted before reaching Time Control 0 (TC 0) at the start of the event. This involves both crew members activating a user console button, and the results of this test will be recorded in the system as confirmation that the system was functioning properly.

Responsibility and Fees

- The competitor is responsible for the STS equipment issued by the system provider. Any untimely return or damage to the STS equipment may result in a fee of up to **€200**, charged by Motorsport Ireland.
- Competition cars that are not equipped with functioning STS equipment will not be permitted to start the event.

Pre-Event Preparation

To ensure a smooth and efficient installation process and to minimize any delays, competitors are requested to consider the following points prior to attending the event:

1. User Console Installation

- Think about the location and method of mounting the user console to adhere to the requirements. The unit weighs approximately **185 grams**. Consider the following options:
 - A plate or bracket can be fixed into the car to which the user console can be bolted, cable-tied, or affixed with industrial Velcro (dimensions attached overleaf).
 - Pre-drill **two holes** in a suitable location to facilitate mounting.
 - If feasible, the console may be attached to the roll cage bar across the top of the front windscreen, either directly using cable ties or to a pre-mounted plate/bracket.

2. Cable Routing

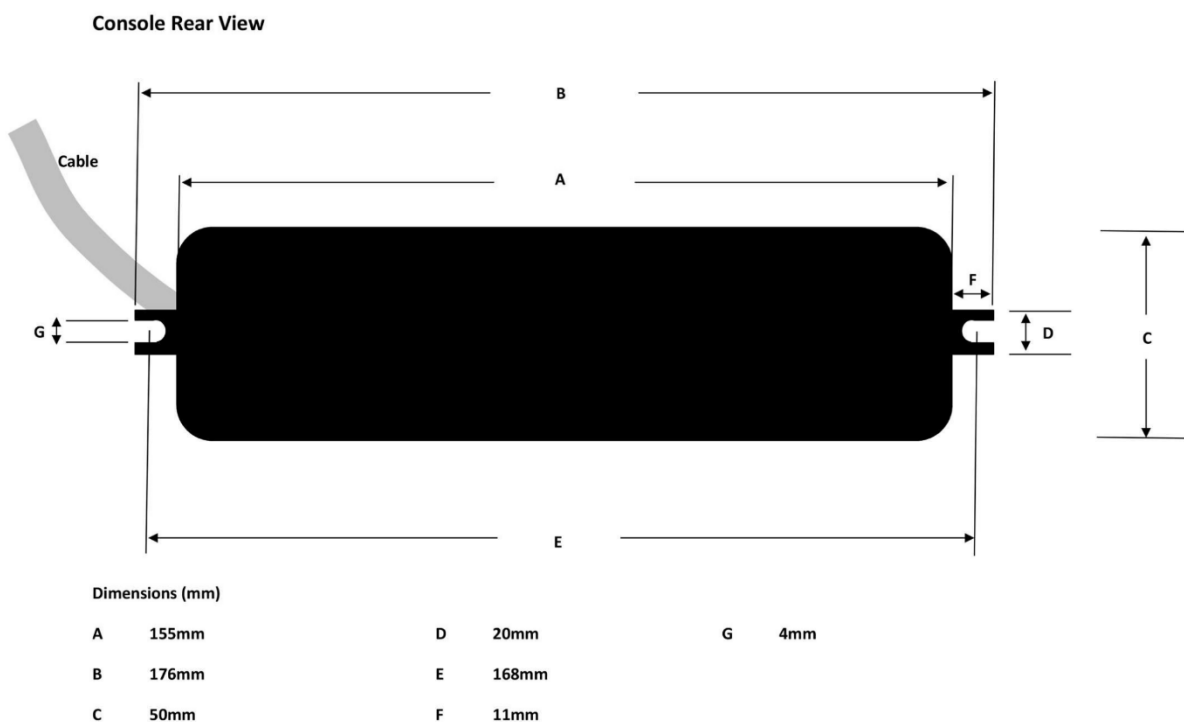
- Ensure the availability of cable ties or other suitable devices to aid in routing the connecting cable from the front to the rear of the car.
- Mount the console first, then run the cable to the main unit in the rear. It is generally easier to manage excess cable length at the rear of the car rather than near the console.
- Avoid connecting the cable to the main unit until the console is securely mounted to prevent unwanted audible alarms from switches being accidentally activated.

3. Receiver/Transmitter Unit Installation

- Select an appropriate bar in the rear of the car for fitting the receiver/transmitter unit, using only the strap provided.
- Ideally, the top of the unit (**featuring the 4Rally logo**) should face upwards through the side window, while the bottom of the unit (which includes the channel/groove for securing) should rest against the roll cage bar.
- The unit enclosure is robust, allowing the ratchet strap to be tightened without risking damage.

(Please refer to the attached dimensions and fixing hole details for the user console.)

Thank you for your attention to these guidelines, and we wish you a successful event!



CONTACT US IF YOU NEED HELP

NI: 07718 760 273 – IRL: 086 8133 228

In-Car Equipment Specifications for Safety Tracker System

The In-Car equipment consists of the following components:

1. Main Receiver/Transmitter Unit:

- **Description:** This is an orange box secured in place using the provided ratchet strap.
- **Installation:** Ensure that the unit is strap tightly against the bar using the ratchet strap, specifically on the side that features a long indentation with six screws.



Receiver / Transmitter Unit

2. User Console (Button & Switch Pad):

- **Description:** This console must be secured tightly in position using cable ties, Velcro, or by screwing it into place using the lugs located on either side of the unit.
- **Connection:** Please ensure that the cable is securely connected to both the receiver/transmitter unit and the user console.



Correct Location for Items

Receiver/Transmitter Unit:

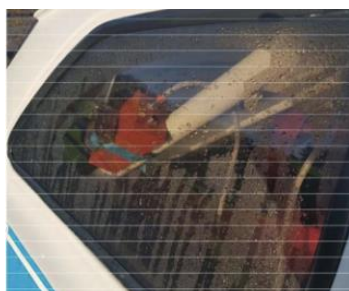
- The ORANGE box unit should be located approximately in the middle of the diagonal bar that is visible through the rear side window of the car.
- The unit must be facing out of the window to optimize GPS signal reception from the internal SIM used in the system.
- If your vehicle lacks the necessary diagonal bar, please consult a representative from 4Rally at the event for guidance.



Button/Switch User Console:

The user console should be positioned prominently within the car to ensure:

- Visibility:** It must be clearly visible to both the driver and navigator.
- Accessibility:** Both the driver and navigator should be able to easily push the buttons or flip the switches.



GPS Safety Tracking System Competitor Information

Emergency Button Procedures

SOS Button:

- **Purpose:** To seek immediate medical services, ambulance, or rescue.
- **How to Use:**
 - Flip up the red safety cover and press the SOS Button.
- **Important Notice:**
 - This button should only be used for emergencies. Please call the emergency number to provide specific details about the situation.
 - Activating the SOS Button will cancel the stage and dispatch services to your location. All remaining cars waiting at the start line will be rerouted via an alternative road book.

OK Button:

- **Purpose:** To report that you are okay during a live stage (e.g., if you need to make an unscheduled stop due to a puncture or breakdown).
- **How to Use:**
 - Press and hold the OK Button for at least **2 seconds**.
- **Important Notice:**
 - This communicates to the control room that you are safe and do not require assistance at this time. If a situation escalates, you may press another button to request further help.

Road Blocked Button:

- **Purpose:** To indicate a blockage on the stage, whether it's caused by you or another vehicle.
- **How to Use:**
 - Press the Road Blocked Button. This button will remain activated until the blockage is cleared.
- **Important Notice:**
 - An active alarm indicates the stage is still blocked. Turning the switch off signifies that the stage is now clear.
 - You should also call the emergency number/control room to provide additional details.
 - It is essential for the control room to hold the start line and warn any live cars of the blockage ahead.
 - The stage must be cleared within **12 minutes**; your assistance in clearing the blockage and exiting the stage promptly will facilitate a potential restart.

Fire Button:

- **Purpose:** To report a fire, whether it involves your car, another vehicle, or any other fire-related emergency.
- **How to Use:**
 - Activate the Fire Button when a fire occurs.
- **Important Notice:**
 - Keep this button activated until the fire has been dealt with.
 - Call the emergency number to provide details about the fire situation.

- This alerts the control room to halt the stage and send assistance for fire control. When the switch is turned off, it indicates that the fire is under control.

Red Flags:

- **Purpose:** To provide a warning indicating that immediate action is required.
- **How to Respond:**
 - If you receive a 'Red Flag' warning through the tracking equipment, the two red LED lights will illuminate, and a loud alarm siren will sound.
 - Immediately slow down and press the 'OK Button' to acknowledge the warning, which will also silence the alarm.

Key Message:

Communication with the control room and back to competitors is crucial in ensuring safety and effective response during events. Please familiarize yourself with these procedures and execute them accordingly.

Additional Installation Notes

Ensure that the installation adheres to the guidelines to guarantee optimal functionality during the event.

If you require assistance during the setup process, team members from 4Rally are available to offer support and answer any questions you may have.

By following these guidelines, you will ensure that the Safety Tracker System is properly installed and ready for operation, enhancing both safety and communication during the rally. Thank you for your cooperation!

Continuous Improvement Through Feedback

As we strive for excellence, feedback from our competitors plays a crucial role. Whether it's insights into what we're doing right or areas that need improvement - we're listening. Please click the link below:

https://docs.google.com/forms/d/e/1FAIpQLScyw7Ek_--Cn3ZCBPdPa9Gx1-qyo9wkfsGNtGq4Tj_GQoO8OQ/viewform

Safety Tracker System – Helpful Information



Equipment Collection and Installation

- **Collection:** All equipment will be available for collection at Scrutiny. It must be fitted by the crew or their team before presenting the car for scrutiny.
- **Assistance:** Advice and guidance on installation will be available if needed.

Equipment Return

- **Return Process:** All equipment must be returned to SVS personnel only. This is typically done in Parc Ferme or at the final time control at the end of the event.
- **Early Retirement:** If you retire early, please contact SVS personnel by phone to arrange the return of the equipment.
- **Items Required:** All three pieces of equipment must be returned and signed back in:
 - GPS Module
 - Control Buttons
 - Ratchet Strap

SVS Van Location

The SVS van is usually located at:

- **Parc Ferme** on the morning of the event
- **Service Area** during the day
- **Parc Ferme / Final Control** at the end of the event

Instructional Videos

To assist competitors with the installation and operation of the equipment, please find the following helpful video links:

- Motorsport Ireland / 4Rally Tracker Operation Video: (<https://youtu.be/WbTx-5A5NBw>)
- Motorsport Ireland / 4Rally Tracker Installation Video: (<https://youtu.be/ooybYgkiFQs>)

Thank you for your attention to these important details. If you have any questions, feel free to reach out.

TJ Hegarty
SVS Productions
Tel. NI: 07718760273
Tel. Ireland: 0868133228

www.svstracking.com

4rally.eu www.autorally.it